

PMPCB Antibody (N-term)
Affinity Purified Rabbit Polyclonal Antibody (Pab)
Catalog # AP4990a**Specification**

PMPCB Antibody (N-term) - Product Information

Application	FC, IHC-P, WB,E
Primary Accession	O75439
Other Accession	NP_004270
Reactivity	Human, Mouse
Host	Rabbit
Clonality	Polyclonal
Isotype	Rabbit IgG
Calculated MW	54366
Antigen Region	18-46

PMPCB Antibody (N-term) - Additional Information**Gene ID** 9512**Other Names**

Mitochondrial-processing peptidase subunit beta, Beta-MPP, P-52, PMPCB, MPPB

Target/Specificity

This PMPCB antibody is generated from rabbits immunized with a KLH conjugated synthetic peptide between 18-46 amino acids from the N-terminal region of human PMPCB.

Dilution

FC~~1:10~50

IHC-P~~1:50~100

WB~~1:1000

E~~Use at an assay dependent concentration.

Format

Purified polyclonal antibody supplied in PBS with 0.09% (W/V) sodium azide. This antibody is purified through a protein A column, followed by peptide affinity purification.

Storage

Maintain refrigerated at 2-8°C for up to 2 weeks. For long term storage store at -20°C in small aliquots to prevent freeze-thaw cycles.

Precautions

PMPCB Antibody (N-term) is for research use only and not for use in diagnostic or therapeutic procedures.

PMPCB Antibody (N-term) - Protein Information**Name** PMPCB

Synonyms MPPB

Function Catalytic subunit of the essential mitochondrial processing protease (MPP), which cleaves the mitochondrial sequence off newly imported precursors proteins (Probable) (PubMed:[29576218](#)). Preferentially, cleaves after an arginine at position P2 (By similarity). Required for PINK1 turnover by coupling PINK1 mitochondrial import and cleavage, which results in subsequent PINK1 proteolysis (PubMed:[22354088](#)).

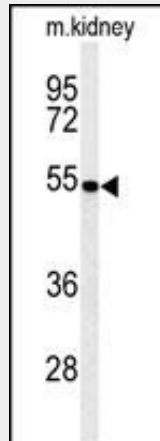
Cellular Location

Mitochondrion matrix

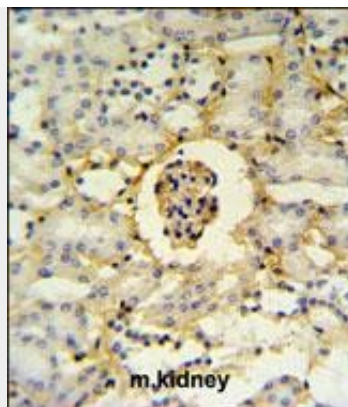
PMPCB Antibody (N-term) - Protocols

Provided below are standard protocols that you may find useful for product applications.

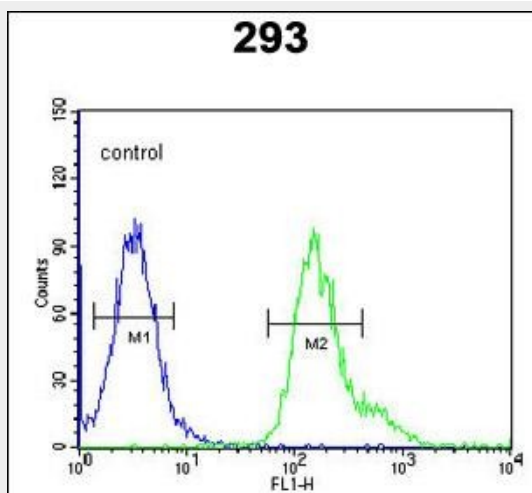
- [Western Blot](#)
- [Blocking Peptides](#)
- [Dot Blot](#)
- [Immunohistochemistry](#)
- [Immunofluorescence](#)
- [Immunoprecipitation](#)
- [Flow Cytometry](#)
- [Cell Culture](#)

PMPCB Antibody (N-term) - Images

Western blot analysis of PMPCB Antibody (N-term) (Cat. #AP4990a) in mouse kidney tissue lysates (35ug/lane). PMPCB (arrow) was detected using the purified Pab.



PMPCB Antibody (N-term) (Cat. #AP4990a) IHC analysis in formalin fixed and paraffin embedded mouse kidney tissue followed by peroxidase conjugation of the secondary antibody and DAB staining. This data demonstrates the use of the PMPCB Antibody (N-term) for immunohistochemistry. Clinical relevance has not been evaluated.



PMPCB Antibody (N-term) (Cat. #AP4990a) flow cytometric analysis of 293 cells (right histogram) compared to a negative control cell (left histogram). FITC-conjugated goat-anti-rabbit secondary antibodies were used for the analysis.

PMPCB Antibody (N-term) - Background

PMPCB is a member of the peptidase M16 family and encodes a protein with a zinc-binding motif. This protein is located in the mitochondrial matrix and catalyzes the cleavage of the leader peptides of precursor proteins newly imported into the mitochondria, though it only functions as part of a heterodimeric complex.

PMPCB Antibody (N-term) - References

- Luczynski, W., et al. Neoplasma 56(5):428-434(2009)
- Schwer, B., et al. J. Cell Biol. 158(4):647-657(2002)
- Nagao, Y., et al. J. Biol. Chem. 275(44):34552-34556(2000)